

Alan Hedegaard Homes

www.hedegaardhomes.com

(402) 681-4413 (712) 566-3304



Home #501 1300-1600 sq. ft. 3-4 bedrooms, 2-3 bathrooms

Main Level

1300-1600 sq ft, depending on options
Kitchen/oak cabinets/vinyl floor
Dinette with raised ceiling
Main floor laundry w/cabinet
Great room/9' ceiling/fan and light
Master bedroom with
~Vaulted ceiling with fan and light
~2 Walk-in closets
~Bath with shower
2 additional bedrooms with ceiling fans
Main bath with tub/shower
GE electric range, dishwasher and microwave
Covered front porch

Garage

Oversized two-car attached garage
Insulated and dry walled
16'x7' Garage door w/opener

Exterior

Maintenance-free vinyl siding
Brick on front
Maintenance-free aluminum soffits and gutters
30 yr laminated asphalt shingles
16'x12' deck with steps
Large Lot
Yard sodded with automatic sprinkler system

Basement

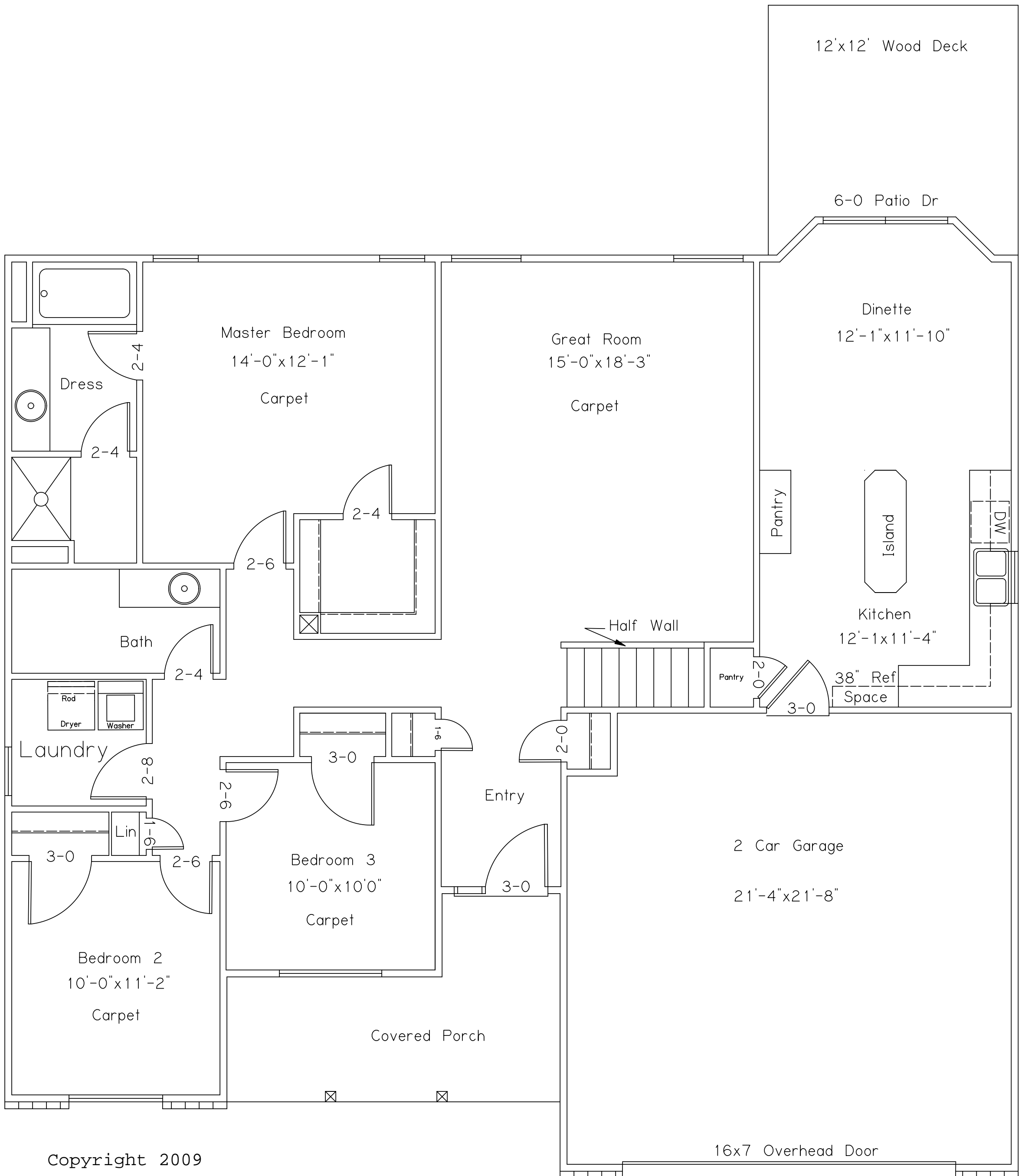
1300-1600 sq ft, depending on options
Roughed in bath (finished option)
Gas water heater
Large basement windows
9' poured concrete foundation

Informational

City sewer and water
Pre-wired for cable and telephone

All of our homes significantly exceed ENERGY STAR specifications and are individually tested to ensure that they meet or exceed the EPA's National Building Performance Rating System. This means that you will save up to \$1,000/year compared to other similar non-ENERGY STAR homes. In addition, all of our homes feature highly-efficient CFL lighting. Your monthly bill for lighting will generally be 75% less than it would be with regular incandescent lighting.





Copyright 2009

Alan Hedegaard Homes All rights reserved.
 Use or modification of this plan without
 written authorization, for construction or
 display purposes, constitutes copyright
 infringement and will be penalized to the
 maximum extent provided by law.